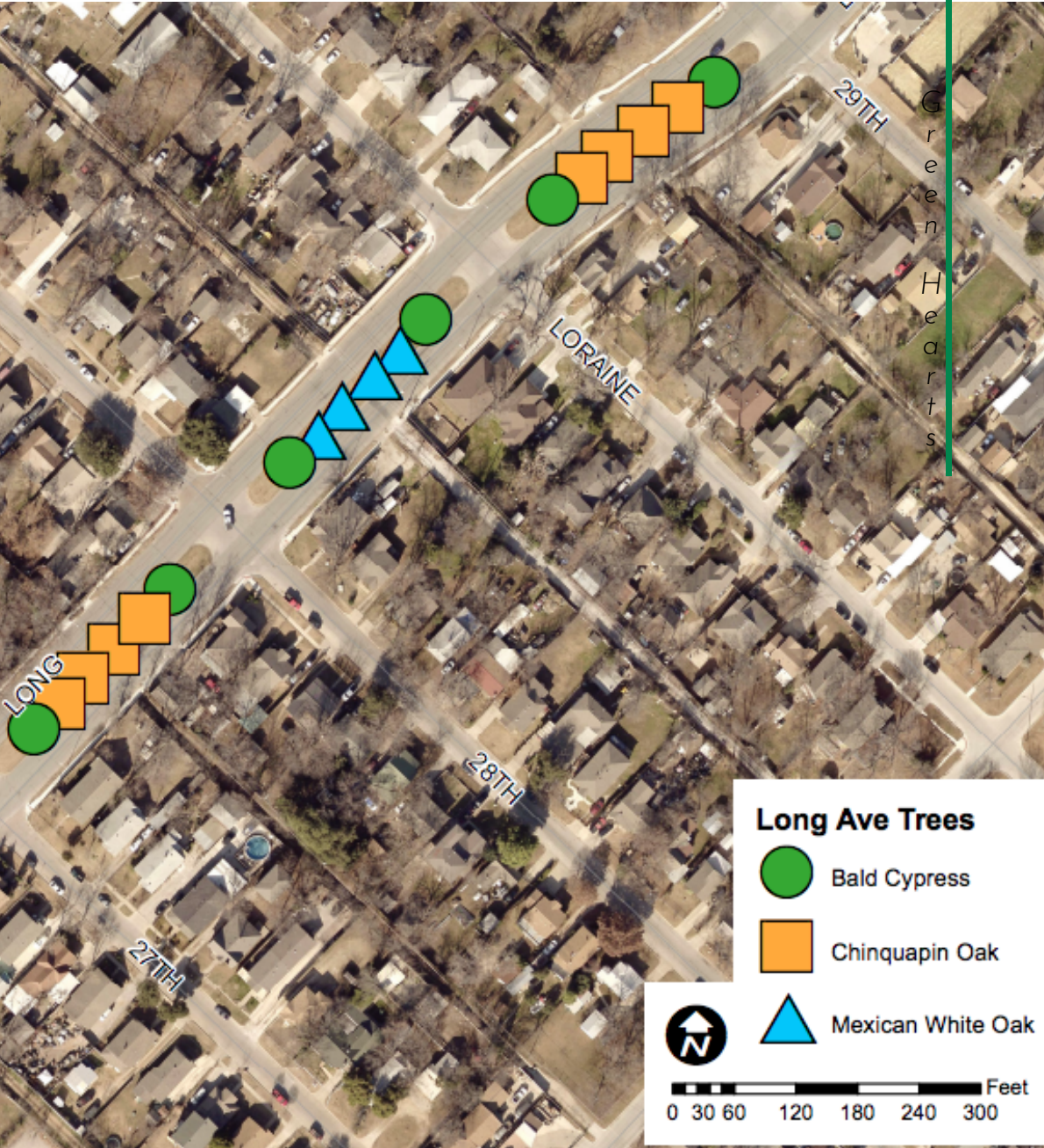


# PLANTED

March 2019

Issue nr. 1



LORA

# WHAT IS THIS TREE PROJECT?

The W. Long Median Tree Planting Project is a community-based and on-going initiative by local crime prevention group, Comunidad 27. The goal of this grassroots development and beautification project is to foster community, which will in the long-term, help reduce crime. Comunidad 27 was awarded 23 trees after applying for a competitive grant through the city's Forestry Section. This is the first time that a community in the Northside has organized a project such as this.

## NOTES

The tree grant includes 23 trees to be planted in the W. Long Ave. median from Azle Ave. to NW 29th St. The grant does not include watering, although the city will be providing water bags. Comunidad 27 members and neighbors will pull funds through fundraising and donations to help cover costs of an independent contractor who will water the trees for 2 years. At that point, the trees will be able to survive on their own.

LONG

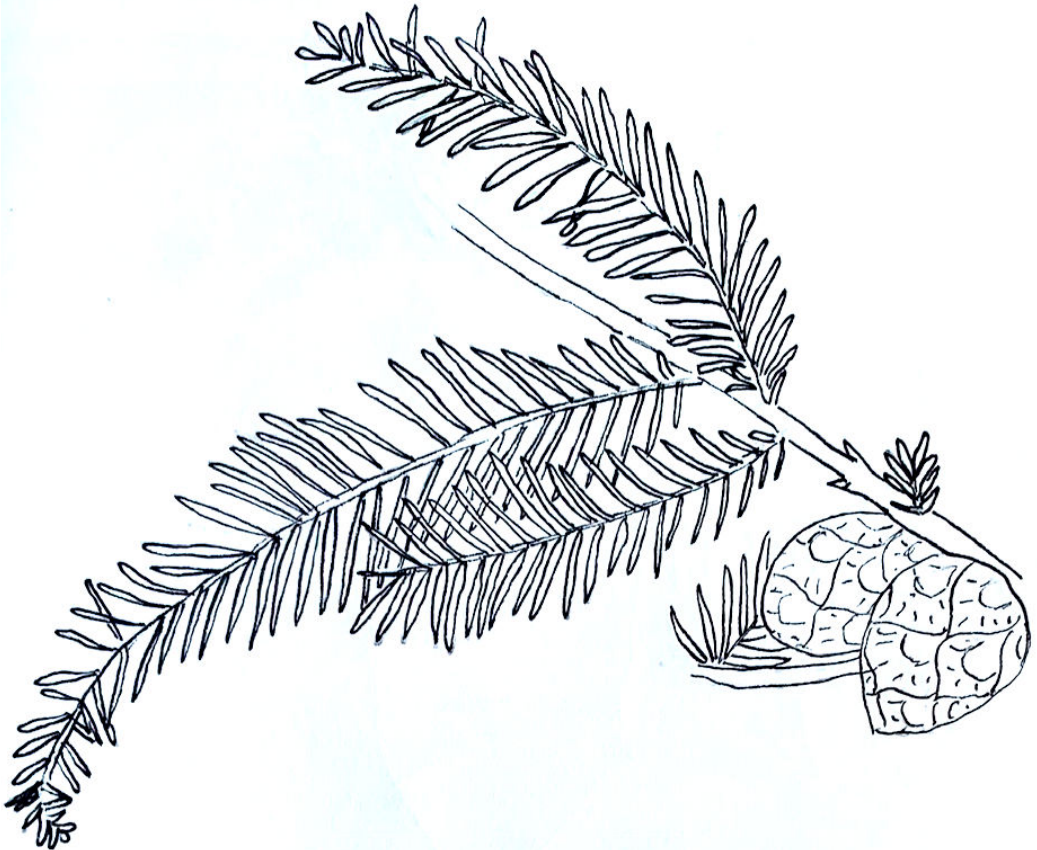




# Meet the 3 New Tree Members of Our Community

---

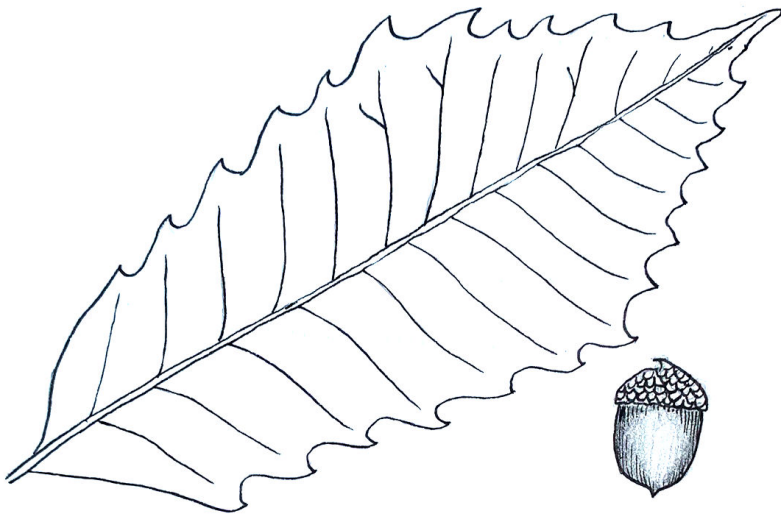
Bald Cypress (*Taxodium distichum*)- Can grow up to 120 ft. The bald cypress is a deciduous (loses its leaves in fall) conifer (cone bearing tree). A member of the Redwood family, they are among the first trees in Texas to lose their leaves in the fall (hence the name "bald cypress") and the last to bud in the spring. Bald cypress can be found throughout the eastern states and west as far as central Texas.





2. Mexican White Oak (*Quercus polymorpha*) above - Native from Val Verde County in west Texas south through Mexico to Guatemala, Mexican White Oak is resistant to oak wilt and is a hardy evergreen oak tree spreading to 60' feet wide as it matures and a height of 80'.

3. Chinquapin Oak (*Quercus muhlenbergii*) below - Is a fast growing Texas Native that can reach up to 80'. These deciduous trees are more prevalent to the north, west, and south of the Fort Worth area.





This Google street view captures a section of the W. Long Ave median where 23 trees will be planted. W. Long Ave is a major road in the Northside that connects Jacksboro Hwy. to Main St. and Diamond Hill. Some of the issues facing locals on either side of this road include littering (trash), car racing, insufficient lighting and many car accidents that affect residential properties and homes.



This rendering of a W. Long Avenue tree vision was completed by local artist, Arnolando Hurtado, in 2016. Through art, Comunidad 27 and other Northside community members have been able to see, participate, and make meaningful impact to this corner of Fort Worth. The most recent community effort, the Convivio Mural at Franko's Market, is a testament to the impact that art can have in a community. See pg. 8.





photo by Arnaldo Hurtado

Comunidad 27 has teamed up with the Fort Worth Police Department and the city of Fort Worth's Forestry Section in recent years to plant trees in the Northside. As a way to deter crime, beautify, foster community, and build trust with different sectors of the city, this community is changing the way we tackle issues in our city.



*Rachel DeLira Pictures*

Photograph by Rachel De Lira

Comunidad 27 is a crime prevention group in the Northside of Fort Worth. Founded in 2015, this community has advocated for safer neighborhoods through potlucks with the Fort Worth Police Department, beautification projects such as tree planting events and the Convivio mural at Franko's Market (featured above), and neighborhood clean-ups.



Visit [www.comunidad27.wordpress.com](http://www.comunidad27.wordpress.com) for more information.